

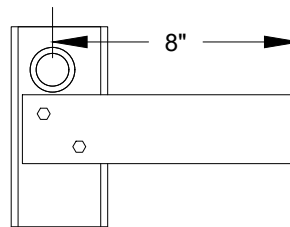
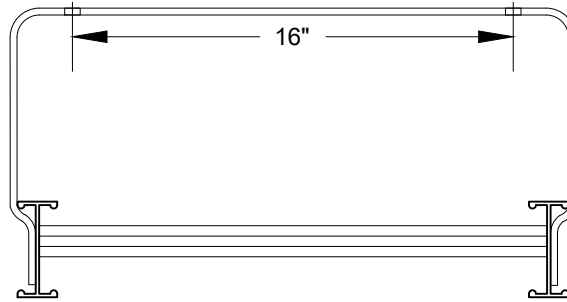
Wall Bracket Locations from bottom of ladder:

1. _____
2. _____
3. _____
4. _____
5. _____

Does any bracket need to be shorter or longer than the other (If so, denote below):

1. _____
2. _____
3. _____
4. _____
5. _____

STANDARD WALL BRACKET

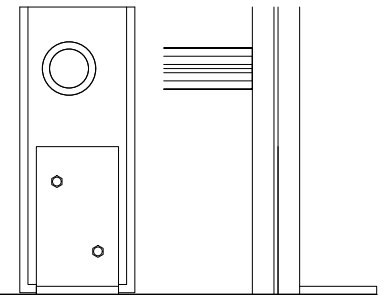


OFF FLOOR MOUNT BRACKET

ALACCB MATERIAL LIST

1	Floor Bracket	2 1/2" x 1/4" 6063-T52 Aluminum Bar. Secured to ladder siderail using [HDWE 2]. 3/16" Pre-drilled hole for mounting hardware (mounting hardware by others).
2	Siderail	Aluminum I Beam Design: Flange Width = 1 7/16", Flange Thickness = 3/4", Web Thickness = 1/8", Web Height = 3 1/2".
3	Rung	Aluminum 6061-T6 deeply serrated ladder rung for hand and foot traction. 300 lb rated / 1200 lb test rating.
4	Wall Bracket	2 1/2" wide x 1/4" thick 6063-T52 Aluminum Bar secured to ladder siderail with [HDWE 1]. 3/16" punched holes that are 16" on center for mounting hardware (provided by others).
5	Splice Joint	Aluminum channel extrusion - 3" web and 1/4" thick 6061-T6 attaching two sections of ladder. Connected to each section of ladder with [HDWE 2].
6	End Cap	Ladder end caps create smooth finish at top of ladder siderail.
7	Boarding Rails	"P" shaped walk through boarding rails formed by rolling aluminum round tube. Handrails are attached to ladder siderail using H1 hardware package. Bolts run through boarding rails, siderail, and are backed with a 3/8" x 1.5" aluminum rectangular bar.
H1	HDWE 1	3/8" hex head, grade 8 bolt paired with (2) 3/8" washers, and a grade 8 nylon locking nut.
H2	HDWE 2	1/2" hex head, grade 8 bolt paired with (2) 1/2" washers, and a grade 8 nylon locking nut.
H3	HDWE 3	1/4" x 1 1/2" aluminum pop rivet.

FLOOR MOUNT



ADDITIONAL OPTIONS:

- Swing Gate at Boarding Rails
- 92" Security Door
- Fall Protection System
-
-

ALACCB

FREIGHT (SPECIFY ADDRESS) WILL CALL - BENICIA, CA

PROJECT: _____

ADDRESS: _____

CITY, STATE, ZIP: _____

JOB PHONE #: _____

COMPANY: _____

CONTACT: _____

SIGNATURE: _____

QUANTITY: _____

PHONE #: _____

EMAIL: _____